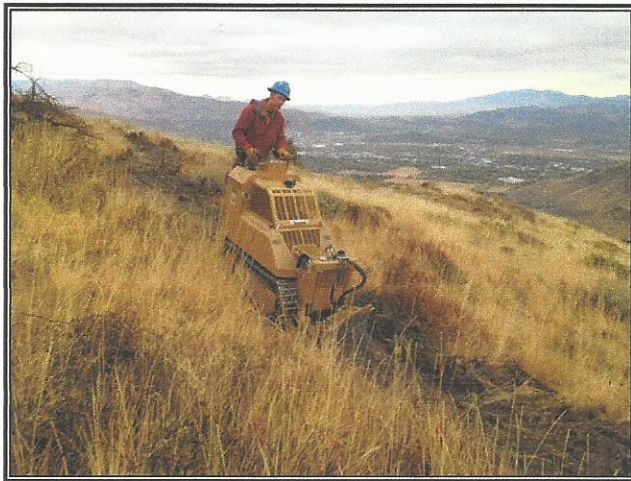


SUTTER 300 MINI TRAIL DOZER™

THE ULTIMATE TRAIL MACHINE™

DESIGNED FOR SINGLE TRACK TRAIL CONSTRUCTION AND MAINTENANCE, PUBLIC WORKS,
CONTRACTORS, RANCHERS AND RESIDENTIAL

PROTECTED BY U.S. PATENT NO. D785,680



You can build approximately 1000 ft./hr. of under 30" wide single track trails. Build trails uphill with ease and rolling dips in minutes. Pay for the SUTTER 300 MINI TRAIL DOZER™ in less than one season with the savings realized from decreased labor costs.

SUTTER EQUIPMENT COMPANY, INC.*

15 INDUSTRIAL PARKWAY

MOUND HOUSE, NV 89706

Tel (775) 246-8689

*Trail Equipment Specialists since 1986

SUTTER 300 MINI TRAIL DOZER™

SPECIFICALLY DESIGNED, ENGINEERED AND TESTED FOR SINGLE TRACK TRAIL MAKING • WOOD LOTS • PARKS & REC., CITY, COUNTY, STATE & FEDERAL MAINTENANCE WORK • RANCHERS • CONTRACTORS • RESIDENTIAL

SPECIFICATIONS*

ENGINE

Make.....Kubota V1505 Turbo
EPA Rating.....Tier 3
Fuel.....Diesel
Horse Power.....44 HP @ 3000 RPM
Type.....4 Cylinders
Cooling Medium.....Water
Electrical System.....12 Volts
Max Inclination, all angles.....30°
Fuel Consumption (*Avg*).....1.0 Gal/Hr

TRANSMISSION

Sauer-Danfoss twin hydrostatic pumps and Auburn Gear 70,000 in. lb. torque hubs

STEERING

Dual controls, full hydrostatic, counter rotating

HYDRAULICS

Gear pump 11 G.P.M. 1200 PSI double filtration, 10 micron

UNDERCARRIAGE

Make.....Berco
Track Frame.....Rigid Frame
Track Rollers.....4 Bottom
Shoes per Track.....31
Track Width x Length.....7" x 48"
Ground Pressure.....5.9 PSI

SERVICE REFILL CAPACITY

Fuel Tank.....6½ Gal
Hydraulic System.....19 Gal
Crankcase.....6 Qt
Cooling System.....3 Gal

FRAME

2" and ½" high tensile steel, unitized with full belly pan, hardened steel pins and bushings, designed for heavy mini dozer services.

MISCELLANEOUS

Width.....29.5"
Length (*with blade*).....8'
Height.....4'7"
Ground Clearance.....4"
Gross Weight (*with blade*).....4360 lbs
Travel Speed.....0-5 MPH
Max Blade Lift.....13"
Max Blade Drop.....10"
Max Blade Angle.....30°
Max Blade Tilt.....25°

STANDARD FEATURES

- Blade 6 Way with Lift & Tilt
- Brass Wear Plates
- Turbo
- Warning Lights
- Vandal Protection Kit
- Tach w/Digital Hour & Volt, Fuel, Water Temp & Oil Pressure Gauges
- Hydraulic Oil Site Glass & Temp Gauge
- Cold Weather Starting
- Heavy Duty Engine Cooling System
- Auxiliary Hydraulics
- Hydraulic Oil Cooler
- Rock Guards
- Safety Brake
- Dry Cell Battery
- Arm Rests & Operator Bumper Pads
- Operator's Seat & Platform
- Winch Receiver Mounts front & back
- Tie Down Hooks (set of 4)
- Cup Holders (2)
- Powdercoat Finish

OPTIONS

- Blade Extension
- Electric Winch
- Light Bar with 3 LED Lights
- Strobe Light
- Back Up Mirror
- Fire Extinguisher
- EDC 2-Stick

PROTECTED BY U.S. PATENT NO. D785,680

*Specifications subject to change without notice.

SUTTER EQUIPMENT COMPANY, INC.
(775) 246-8689 • www.sutterequipment.com